



Sea BreezeTM

OF CALIFORNIA

Resort Lifestyle Apparel

100% Pre-Shrunk Cotton American Classic Casual Wear

Summer 2024



Made in USA

9225 Alabama Ave. Unit A
Chatsworth, CA 91311, USA
Tel.: (818) 886-3486
Fax: (818) 886-3487
info@seabreezeofcalifornia.com
www.seabreezeofcalifornia.com

updated: 8/9/2023

American Gauze Classics

(medium weight crinkle)



Style # 370
Tab Shirt
\$27.00 (XS--3X)



Style # 458
Pintuck Shirt
\$30.00 (XS--3X)



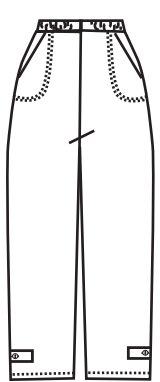
Style # 427
Paulina Top
\$23.50 (XS--4X)



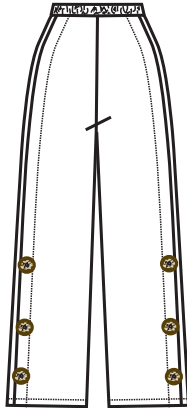
Style # 427 VB
V-Neck Paulina Top
\$23.50 (XS--2X)



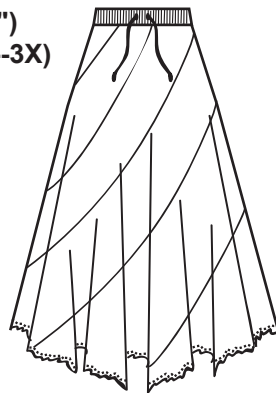
Style # 217
Capri Pants
(Inseam 21")
\$24.75 (XS--3X)



Style # 369
Tab Pant
(Inseam 22 1/2")
\$25.00 (XS--3X)



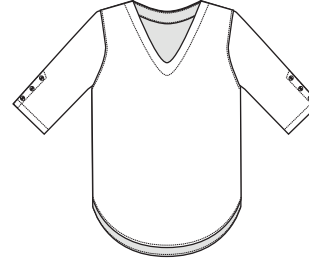
Style # 221
Malibu Pants
(Inseam 25")
\$26.00 (XS--3X)



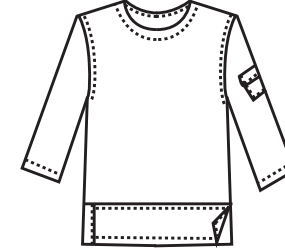
Style # 436
Flamingo Skirt
(36" long)
\$35.00 (XS--2X)
(Plus Sizes +\$4.00)

Miami Gauze

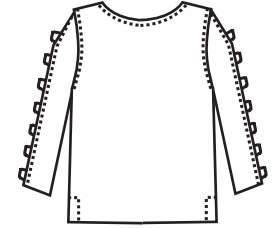
(light weight crinkle)



Style # 812
V-Neck Tunic
w/button sleeve
\$27.00 (XS--3X)



Style # 392
Pocket Top
\$26.50 (XS--2X)



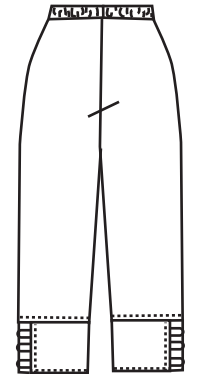
Style # 51
Lattice Sleeve Top
\$27.00 (XS--3X)



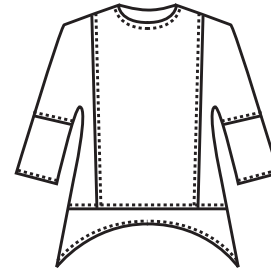
Style # 67
Henley Tank
\$23.00 (XS-3X)



Style # 508
Novelty Button Shirt
\$28.00 (XS--3X)



Style # 52
Lattice Capri
(Inseam 21")
\$23.25 (XS--3X)



Style # 401
Asymmetrical Top
\$28.00 (XXXS--3X)



Style # 458-L
Pintuck Shirt
\$30.00 (S--XL)



Bahama Gauze



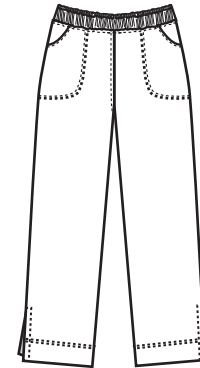
Style # 055
Sanibel Top
\$27.00 (XS--3X)



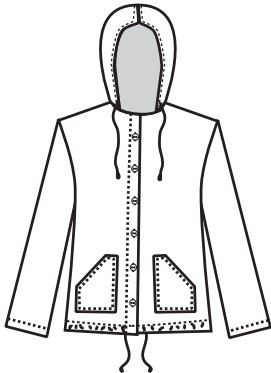
Style # 364
V-neck Lattice Top
\$27.00 (XS--3X)



Style # 449
Sedona Top
w/Fringe
\$29.00 (XS--3X)
Bahama Gauze



Style # 822-B
Crop Pants
(inseam 23")
\$26.00 (XS-3X)



Style # 368-B
Hoody Jacket
\$30.00 (XS--2X)



Style # 028
Hi-lo Frayed-
Side Tab Top
\$27.00 (XS--2X)



Style # 035-P
Frayed & Pocket Top
\$27.00 (XS--1X)



Style # 215 B
Ankle Pants
(Inseam 27 1/4")
\$25.00 (XS--2X)

Embroidered Cotton

Eyelash and Tapa



Style # 827-T (Tapa & Paisley)
Milan Shirt (30" long)
\$30.25 (XS--2X)



Style # 815-TV (Tapa)
V- Neck Pullover
\$28.25 (XS--3X)



Palm Tree
Style # 394-E
V-Neck Top
\$30.00 (S--XL)



Eyelash
Style # 394-E
V-Neck Top
\$30.00 (XS--3X)



Dragonfly
Style # 394-E
V-Neck Top
\$30.00 (S--XL)





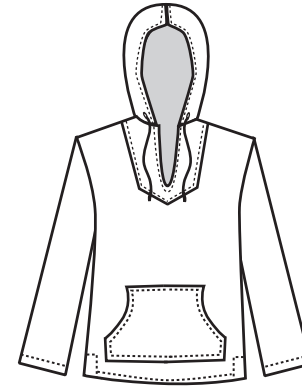
Style # 430
V Neck Point Hem Top
w/slv notch & side slit
\$26.00 (XS--2X)



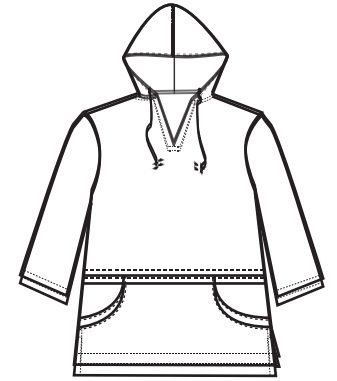
Style # 449-L
Lace Sedona Top
\$27.00 (XS--3X)
Bahama Gauze



Style # 027
Montebello Pullover
(with frayed styling and
buttons details)
\$31.00 (XS--2X)



Style # 745 B
Hoodie Pullover
(cotton jersey hoodie)
\$30.00 (XS--3X)



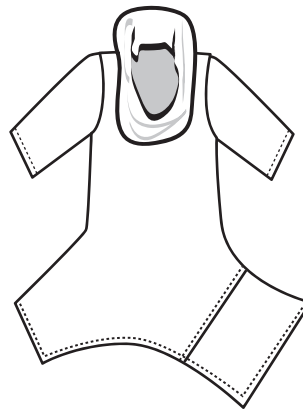
Style # 060
Pullover with Hood
\$30.00 (S--1X)



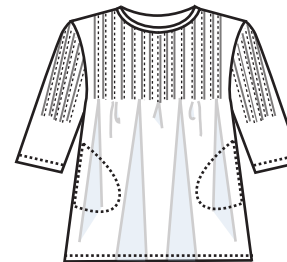
style # 465-F
Open Sleeve Top
with a pocket
\$27.00 (XS--3X)



style # 0103-F
Bell Slv. Top
\$28.00 (XS--2X)



Style # 013
Cowl-Neck Dress
\$32.00 (XS---3X)



Style # 457-B
Pintuck Pullover Top
(hidden on-seam
side pockets)
\$28.00 (XS--2X)



Style # 093
Lanikai Top
(Hidden front pockets)
\$27.00 (XS--3X)



Made in the USA

PLUS SIZES + \$3.00 **PIGMENT DYES +\$2.00**
All measurements are approximate and are provided for informational purposes only.

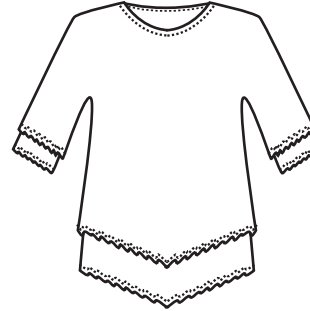
French Gauze



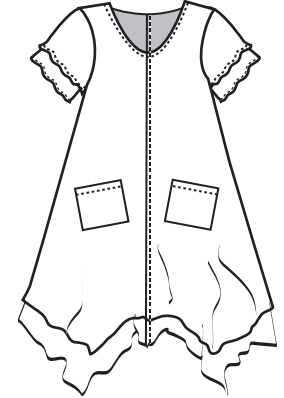
Style # 466-F
Aubrey Top
(with merrow
stitch detail)
\$23.75 (XS--3X)



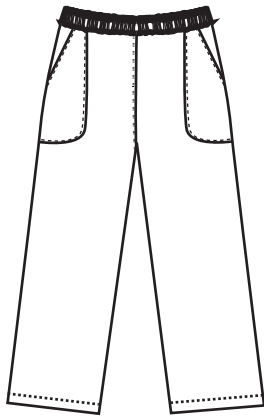
Style # 443
Double Layer-Tank Top
(S--XL)
\$22.00



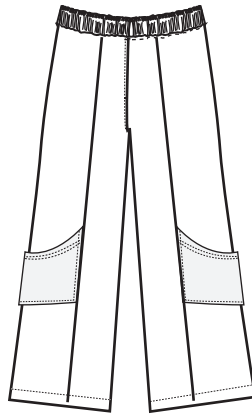
style # 438-F
Pointed Hem
Double Layer Top
\$28.00 (XS--2X)



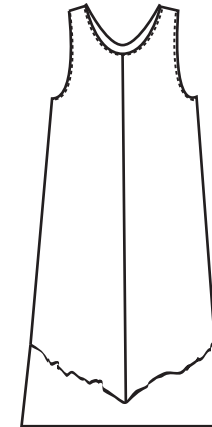
Style # 014
Two Pocket Dress
(34" long)
\$36.00 (XS--2X)



style # 0106-F-
Double Layer Pants
(inseam 25")
\$24.00 (XS--2X)



Style # 080
Gaucho Pants
(Inseam 26")
\$26.00 (XS--3X)



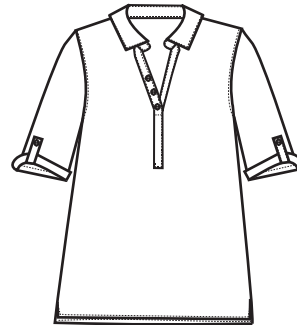
Style # 068-F
Double Layer
Tank Dress
(37" long)
\$33.00 (XS--2X)



Trina's Treasures part deux



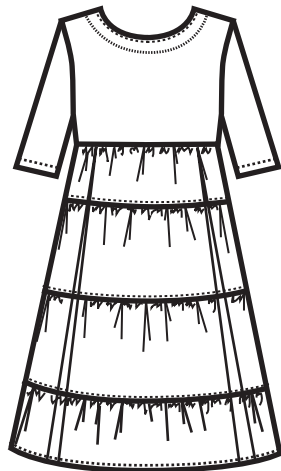
Style # 099
Maybell Top
w/buttons on slv.
\$27.00 (XS--2X)



Style # 062
Coastside Top
w/button tab sleeves
\$30.00 (XS--1X)



style # 0115
Hi-Lo Cardigan
w/frayed detail
\$27.00 (XS--1X)
Bahama Gauze



style # 377 (L)
Sunset Dress
\$36.00.00 (S--XL)
39" long

Fabric: Light weight Crinkle Cotton
(top-knit jersey & skirt-light crinkle)



style # 024
Beach Cover-up
(36 1/2" Long)
\$35.00 (S--1X)
Hawaiian Gauze



Style # 079
Cold Shoulder Top
French Gauze
\$23.00 (XS--2X)



Made in the USA

PLUS SIZES + \$3.00

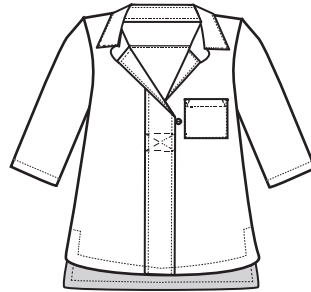
PIGMENT DYES +\$2.00 *

Cool Cotton

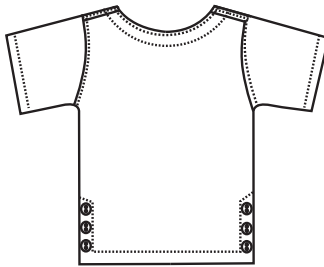
(Crosshatch)



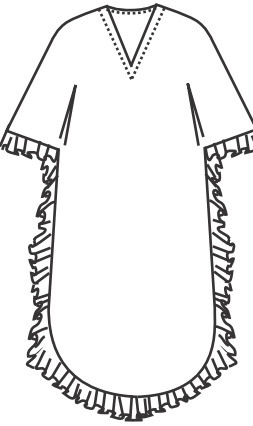
Style # 0112
Three Button Slv. Top
\$33.00 (XS--2X)
Cool Cotton



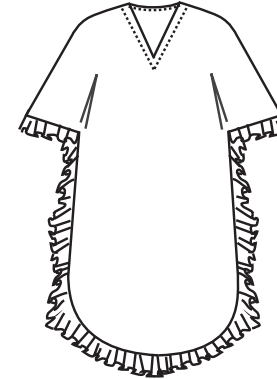
Style # 090
Hi-Low Shirt
w/Front Pocket
\$33.00 (XS--2X)
Cool Cotton



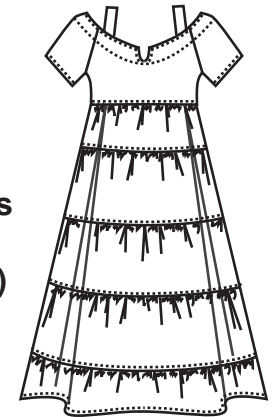
Style # 501
Side Buttons Top
\$33.00 (XS--3X)
Cool Cotton



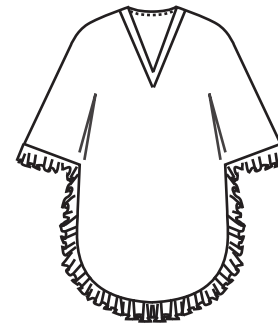
Style # 50
Long Patio Dress
(48" long)
\$37.25 (One Size)
Miami Gauze



Style # 50-S
Short Patio Dress
(42" long)
\$36.25 (One Size)
Miami Gauze



Style # 424
Off the Shoulder Dress
(baby rib bodice.
The tiered skirt-
is made in Miami
Gauze fabric)
(51 1/2" long)
\$38.00 (XS--3X)
(plus sizes 1X--3X
+\$4.00)



Style # 435
Ruffle Tunic
(37" long)
\$35.25 (One Size)
Miami Gauze

Beach Cover ups & Dresses



Made in the USA

PLUS SIZES + \$3.00

PIGMENT DYES +\$2.00 *

UNISEX STYLES

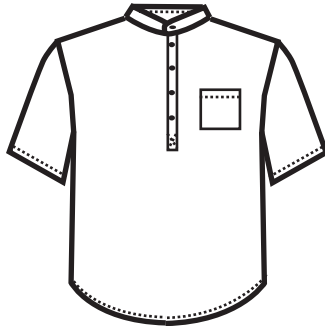
American Gauze

medium wt. crinkle cotton

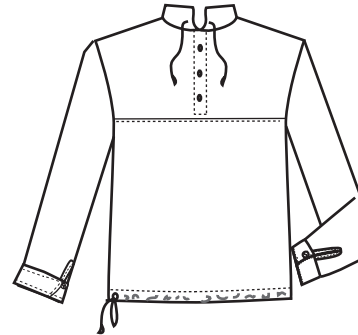
PLUS SIZES + \$3.00



Style # 100
Drawstrings Pullover
\$26.00 (XS--3X)



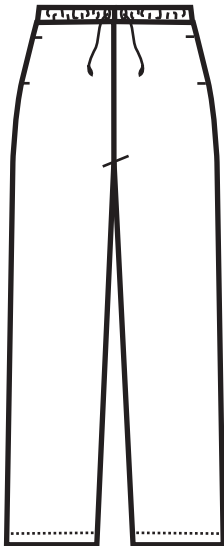
Style # 112
5 Button Henley
\$27.00 (XS--4X)



Style # 740
Long Sleeve Pullover
\$30.00 (XS--2X)



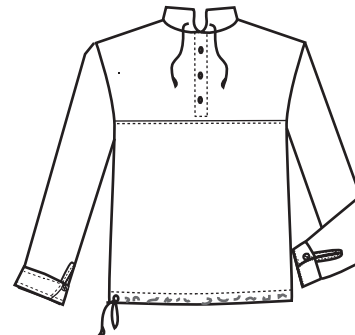
Style # 112-LS
Henley Shirt w/Long Slv.
\$ 31.00 (XS--1x)



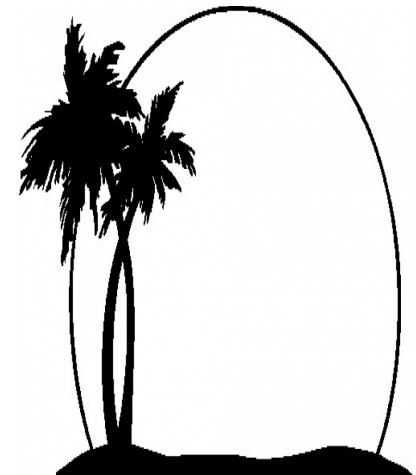
Style # 216
Long Pants
(inseam 32")
\$26.00 (XS--3X)



Style # 213
Bermuda Shorts
(inseam 8")
\$20.75 (XS--3X)

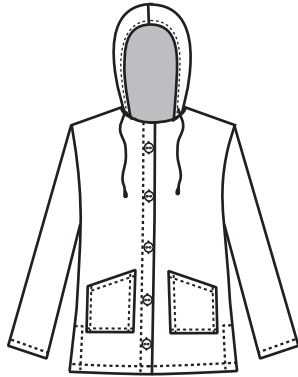


Style # 740-F
Long Sleeve Pullover
Canton Fleece
\$33.00 (XS--2X)

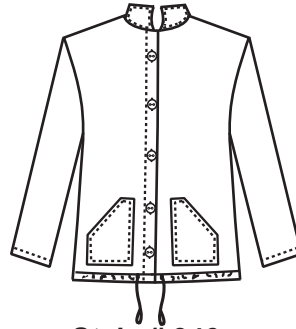


PIGMENT DYES +\$2.00

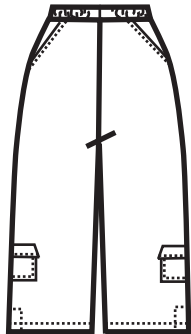
Canvas



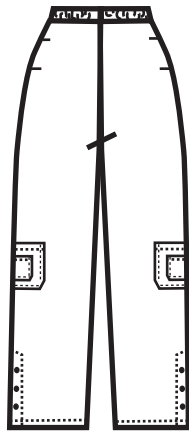
Style # 0300
Sunset Jacket
\$35.00 (XS--2X)



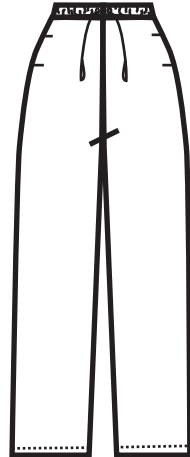
Style # 346
Balboa Jacket
\$32.00 (XS--3X)



Style # 227
BoardWalker Pants
(Inseam 15")
\$24.00 (XS--3X)



Style # 342
Catalina Pants
(Inseam 24")
\$28.00 (XS--3X)



Style # 304
Crop Pants
(Inseam 26")
\$25.00 (XS--1X)



Style # 301
Long Pants
(Inseams 29")
\$26.00 (XS--2X)

PLUS SIZES + \$4.00

PIGMENT DYES +\$2.00 *

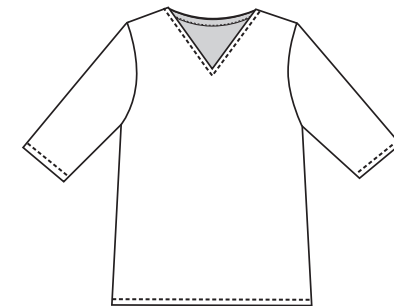
All measurements are approximate and are provided for informational purposes only.

Knits

PLUS SIZES NOT AVAILABLE
Pre-Packs only per style/color
PIGMENT DYES +\$1.00



Style # 154
Heather Stripe Round Neck-
Tee w/10" Slv.
\$17.50 (S--XL)
Pre-pack Only (1-2-2-2)



Style # 120
3/4 Slv. V-Neck Tee
\$16.50 (S--XL)
Pre-pack Only (1-2-2-2)



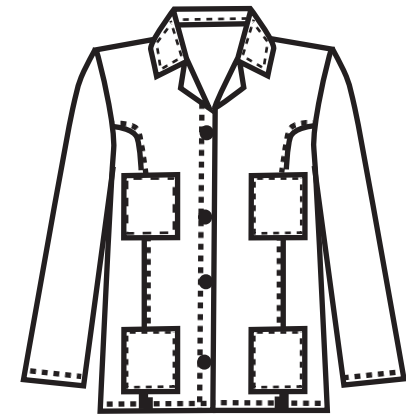
New Styles



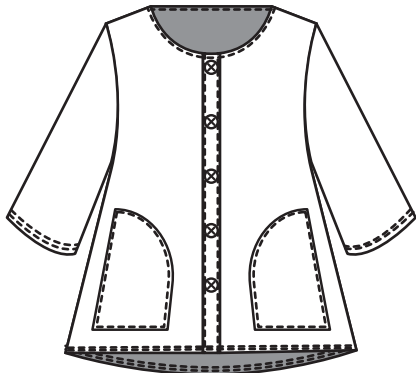
Style # 234
Miami Gauze
Fringe Top
\$25.25
(S--XL)



Style # 223
French Gauze
Hi Low
\$26.50
(S--XL)



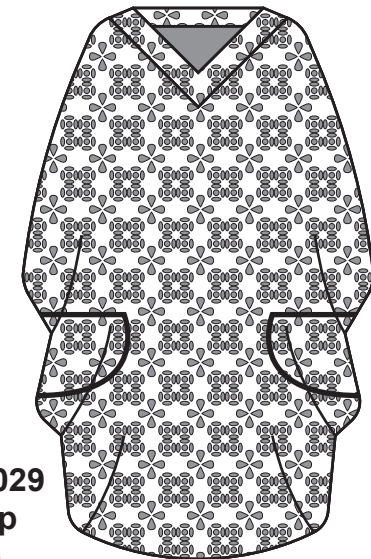
Style # 329
Canvas
Safari Jacket
\$35.00
(S--XL)



Style # 224
Cardigan w/ Pockets
American Gauze
\$25.75
(S--XL)



Style # 238
Mandarin Collar
Miami Gauze
\$28.25
(S--XL)



Style # 029
Lace Top
All Lace
\$36.00
(S--XL)

