



Sea Breeze

OF CALIFORNIA

*100% Pre-Shrunk Cotton American Classic Casual Wear
Resort Lifestyle Apparel*

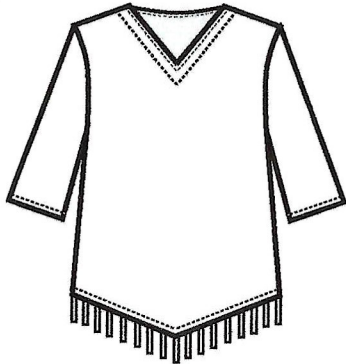
**Fall & Winter
2024**



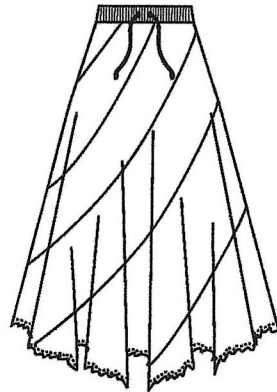
Made in the U.S.A

9225 Alabama Ave. Unit A
Chatsworth, CA 91311, USA
Tel.: (818) 886-3486
Fax: (818) 886-3487
info@seabreezeofcalifornia.com
www.seabreezeofcalifornia.com

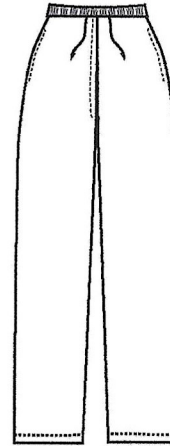
updated 2/10/2024



Style # 449
Sedona Top
 w/Fringe
\$29.00 (XS--3X)
 (Bahama Gauze)



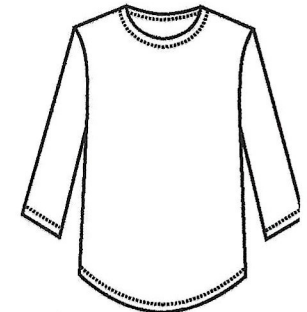
Style # 436
Flamingo Skirt
 (36" long)
\$35.00 (XS--2X)
 (Plus Sizes +\$4.00)
 (American Gauze)



Style # 215 B
Ankle Pants
 (Inseam 27 1/4")
\$25.00 (XS--2X)
 (Bahama Gauze)



Style # 458
Pintuck Shirt
\$30.00 (XS--3X)
 (American Gauze)



Style # 427
Paulina Top
\$23.50 (XS--4X)
 (4X +\$4.00)
 (American Gauze)



style # 377 (L)
Sunset Dress
\$36.00.00 (S--XL)
 39" long
 Fabric: Light weight Crinkle Cotton
 (top-knit jersey & skirt-light crinkle)



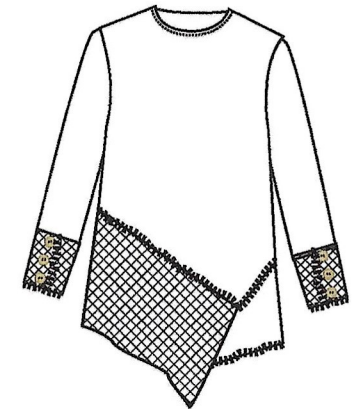
Style # 458-L
Pintuck Shirt
\$30.00 (XS--3X)
 (Miami Gauze)

Embroidered Cotton
 (Paisley & Tapa)

Style # 827-T (Tapa & Paisley)
 Milan Shirt (30" long)
\$30.25 (XS--2X)



style # 541
Lakebridge Top
\$32.50 (XS--XL)
 (French Terry)



style # 054
Grandbury Top
\$32.50 (XS--XL)
 (French Terry)

Knits

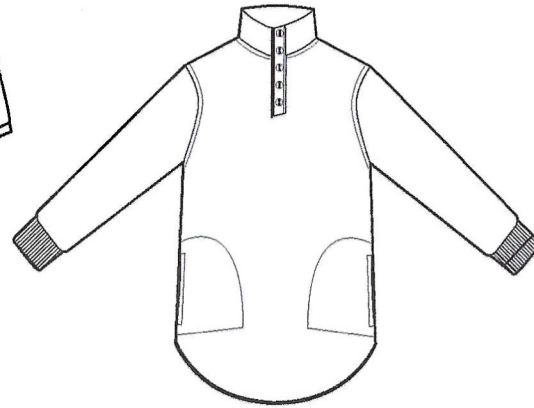
PLUS SIZES NOT AVAILABLE
Pre-Packs only per style/color
PIGMENT DYES +\$1.00



Style # 661
Hoody Jacket
\$37.00 (XS--2X)



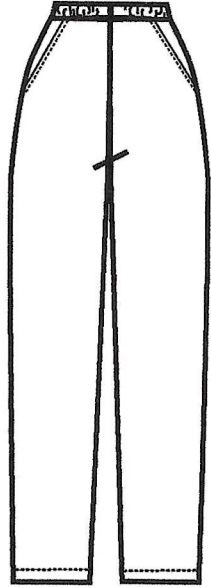
Style # 663
Ventura Shirt
\$30.00 (XS--3X)



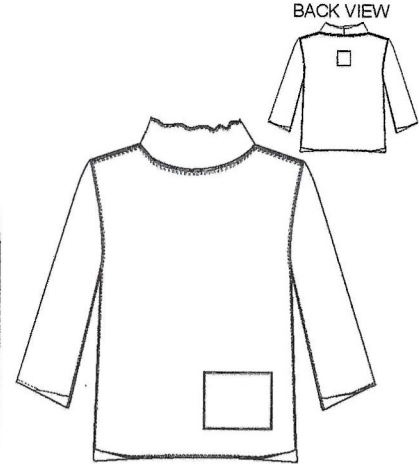
Style # 821
Riverside Pullover
\$ 32.00 (XS--3X)



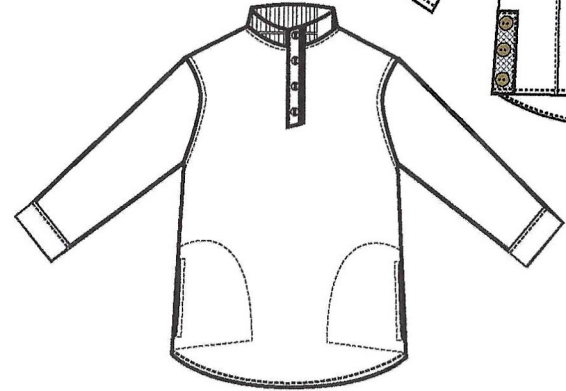
style # 0303
Savannah Tunic
\$34.00 (XS--3X)
(Canton Fleece)



style 618
Long Pant
(inseam 29 1/4")
\$27.00 (XS--2X)
(Canton Fleece)



Style # 471
Beach Cruiser Pullover
\$31.00 (XS--3X)



style # 841
Arrowhead Pullover
w/ribbed collar
\$33.00 (XS--1X)

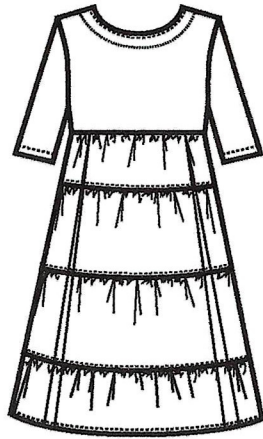


Style # 154
Heather Stripe Round Ne
Tee w/10" Slv.
\$17.50 (S--XL)
Pre-pack Only (1-2-2-2)

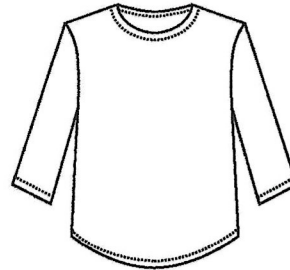


Style # 120
3/4 Slv. V-Neck Tee
\$16.50 (S--XL)
Pre-pack Only (1-2-2-2)

PLUS SIZES + \$3.00 PIGMENT DYES +\$2.00 * MINERAL WASH +\$4.00
All measurements are approximate and are provided for informational purposes only.



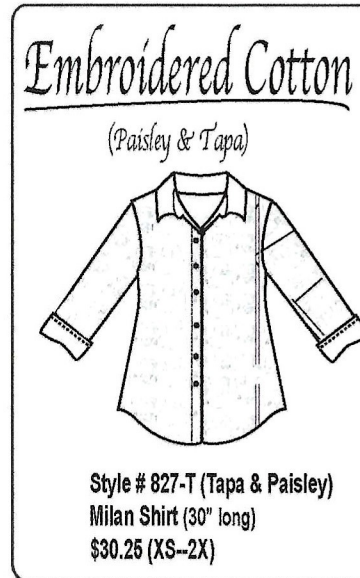
style # 377 (L)
Sunset Dress
\$36.00.00 (S--XL)
39" long
Fabric: Light weight Crinkle Cotton
(top-knit jersey & skirt-light crinkle)



Style # 427
Paulina Top
\$23.50 (XS--4X)
(4X +\$4.00)
(American Gauze)



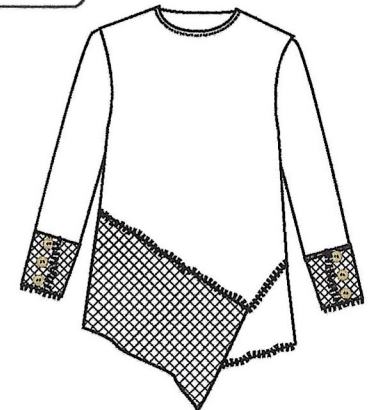
Style # 458-L
Pintuck Shirt
\$30.00 (XS--3X)
(Miami Gauze)



Style # 827-T (Tapa & Paisley)
Milan Shirt (30" long)
\$30.25 (XS--2X)



style # 541
Lakebridge Top
\$32.50 (XS--XL)
(French Terry)



style # 054
Grandbury Top
\$32.50 (XS--XL)
(French Terry)

PLUS SIZES + \$4.00 PIGMENT DYES +\$2.00 * MINERAL WASH +\$4.00
All measurements are approximate and are provided for informational purposes only.

